

Overview - Pathfinder MapEdge™

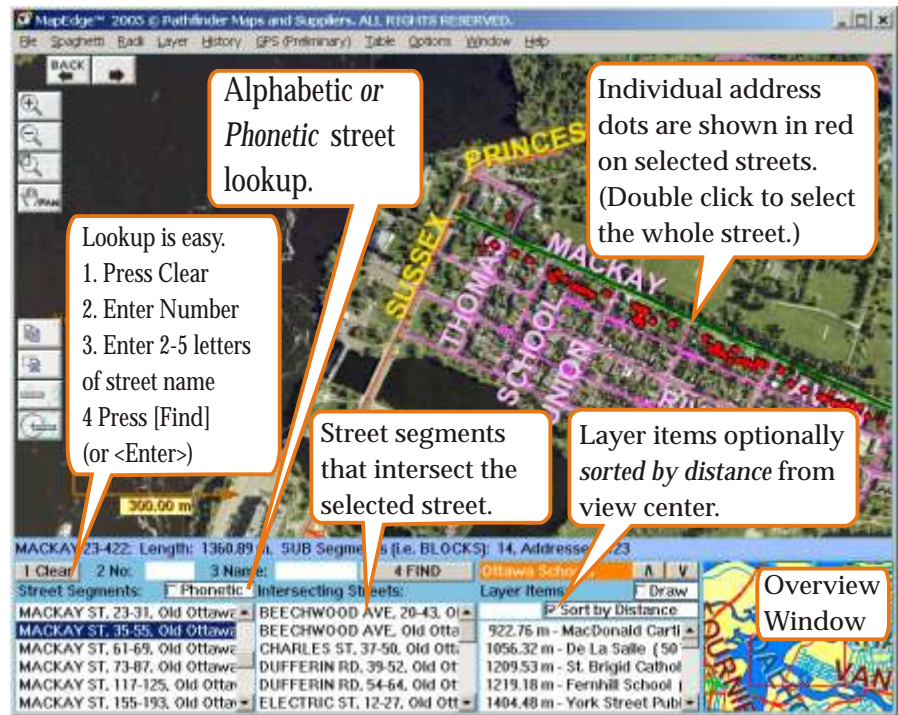
Air photos, street vectors and points for every single address in Ottawa and Gatineau in a stand alone software package with zoom, search, measure and optimize capabilities.

Comprehensive and New Data

- >300,000 individual address points - updated Jun 15, 2005.
- Street vector data - updated Jun 15, 2005, *including proposed roads.*
- 4,200 square kilometres of air photos, seamlessly integrated, (summer 2002).

Easy User Interface

- User requires *minimal knowledge and is always provided with instant feedback.*
- Exact spelling is not required with phonetic lookup.
- Street numbers are pinpointed on the air photos.
- *History layer* provides easy access to previous lookups.
- *All functions* provide instant feedback for more effective and faster learning.



Comprehensive

Lookup and Analysis Tools

Items marked with * are only available in MapEdge Analyst.

- Lookup locations on the air photos using street name, number, intersection, Latitude/Longitude, UTM or MTM Easting/Northing, or names from the school, park, arena, golf course, etc., lists. The air photos give you the ability to see the destination.
- Measure without leaving your desk. Measure length and area* with radius* and spaghetti tools or obtain a count of the number of houses in an area* using the address counting tools*.
- Communicate with the best graphics. Cut and paste air photos into your presentations.
- Find shortest or fastest routes between locations - using UP TO DATE DATA.
- Choose the best location for services using the Response Zone Calculator* to find out what streets and how many addresses are within a particular time or distance from any given location.

Contact: Pathfinder Maps, 5 -10511 Hwy 7, Carleton Place, On, K7C 3P2, (613)-257-1137, www.pathfindermaps.ca

Requires: 4 GB disk space on drive C: and >= 700 MHz Intel or AMD type processor.